

Engineering Capital Empowering Growth

PT. SUTAN NUSANTARA INVESTAMA

Jl. Boulevard Metland Cileungsi Blok DF - No. 9 - Cileungsi
Bogor Regency - West Java - Indonesia 16820

☎ +62 811-211-995 ✉ office@sutan-strategic.com

Executive Summary

“Architecting Strategic Capital. Structuring Sustainable Growth.”

PT. Sutan Nusantara Investama is a strategic advisory and investment company specializing in corporate strategy development, capital structuring, and project-based investment transactions.

The company was founded on the belief that sustainable business growth requires more than access to capital. It demands disciplined structuring, measurable strategy, and institutional-grade execution in every financial decision. PT. Sutan Nusantara Investama serves as a strategic partner in building that foundation.

Our core services include:

-  Strategic Corporate Advisory
-  Capital Structuring & Debt Advisory
-  Equity & Project Financing Advisory
-  Financial Modeling & Valuation
-  Deal Structuring & Negotiation Support
-  Institutional Documentation Preparation

PT. Sutan Nusantara Investama supports companies undergoing growth, expansion, restructuring, or transformation, particularly within the energy, infrastructure, commodity trading, and strategic project-based sectors.

As an independent company, PT. Sutan Nusantara Investama operates under strict principles of integrity, confidentiality, and professionalism. We do not act merely as transaction intermediaries; we function as strategic advisors ensuring that every structure and decision is financially sound and institutionally grounded.

Through structured analysis, disciplined execution, and a curated capital network, PT. Sutan Nusantara Investama is committed to becoming a catalyst for sustainable and institutionally aligned business growth at both national and regional levels.

PT. Sutan Nusantara Investama is a strategic advisory and investment company established to help businesses navigate complexity, uncertainty, and critical growth decisions. In today's competitive and capital-intensive environment, strategic missteps can be costly. We exist to provide clarity, structure, and disciplined direction when it matters most.

Many businesses do not fail due to lack of opportunity — they fail due to poor structuring, misaligned capital, or uncalculated risk. A trusted advisor plays a vital role in transforming ambition into executable strategy. We design robust capital frameworks, align financial strategy with long-term objectives, and ensure every transaction is grounded in governance, risk awareness, and institutional standards.

At PT. Sutan Nusantara Investama, we stand beside our clients as strategic partners — offering independent judgment, structured thinking, and execution discipline. Because in moments of expansion, restructuring, or investment, the right advisory support is not optional — it is essential to sustainable growth.

Our approach is built upon five core pillars:



STRATEGIC & DIAGNOSIS

Comprehensive assessment of business models and financial positioning



STRUCTURED FINANCIAL ENGINEERING

Risk-based and sustainability-driven capital design



CAPITAL ALIGNMENT

Matching project requirements with appropriate investor or lender profiles



GOVERNANCE & RISK AWARENESS

Strengthening compliance, governance, and risk mitigation frameworks



EXECUTION DISCIPLINE

End-to-end advisory support through implementation and monitoring

About The Founder



Sutan Akbar is the Founder of PT. Sutan Nusantara Investama and the initiator of Sutan Strategic Advisory. The company was established with the vision of building an Indonesian advisory platform that operates with institutional standards, disciplined risk management, and a global perspective in designing corporate strategies and capital structures.

He brings more than a decade of professional experience from Bank Mandiri, the largest state-owned bank in Indonesia by assets and operational scale. In his last role within Strategic & Business Analytics, he was involved in corporate performance analysis, data-driven strategy formulation, business risk evaluation, and the development of strategic recommendations at the managerial level. This experience shaped a strong institutional perspective in understanding corporate financing structures, regulatory expectations, and governance dynamics within large-scale organizations.

Over the past two years, Sutan has also served as Team Leader Consultant for the Business Continuity Management System (BCMS) at PT. Pelabuhan Indonesia (Persero) – PELINDO Group, one of Indonesia's strategic state-owned enterprises. In addition to strengthening the Business Continuity Management framework, he has been involved in the development of the Business Contingency Plan in alignment with the Shareholder Aspirations and directives of the Kementerian Badan Usaha Milik Negara Republik Indonesia. This mandate further enhanced his expertise in integrating risk management, organizational resilience, and corporate strategy within nationally significant entities.

As part of its commitment to strong governance standards, PT. Sutan Nusantara Investama adopts a professional structure that clearly separates ownership and management functions. The company's operations are led by an independent professional team consisting of certified experts in finance, risk management, legal, valuation, and corporate governance, each operating within their respective areas of specialization. This model ensures objectivity, technical discipline, and institutional-grade advisory quality across all strategic mandates.

In his capacity as Founder, Sutan Akbar focuses on long-term strategic direction, capital network development, and strengthening the company's positioning at both national and regional levels. Managerial and operational responsibilities are executed independently by the professional management structure, reflecting the company's commitment to governance excellence.

Through a combination of institutional experience, analytical discipline, and governance-driven leadership, Sutan Akbar guides PT. Sutan Nusantara Investama toward becoming a trusted strategic partner for boards, shareholders, and investors in high-value, long-term decision-making.

Vision & Mission



VISION

To become a strategic advisory and investment partner that accelerates corporate growth through precise capital architecture, sustainable financial structuring, and unwavering integrity that earns investor trust.

MISSION

1

Driving Growth Through Strong Capital Architecture

Designing financing structures aligned with corporate expansion, transformation, and long-term value creation.

2

Safeguarding Investor Confidence Through Integrity and Transparency

Executing every mandate with professionalism, objectivity, and a strong commitment to ethical standards and sound governance principles.

3

Connecting Businesses with Credible and Strategic Capital

Aligning corporate needs with investors and financial institutions that match risk profiles and long-term strategic objectives.

4

Enhancing Corporate Value and Investment Readiness

Optimizing financial structures, capital efficiency, and institutional preparedness to strengthen valuation and market confidence.

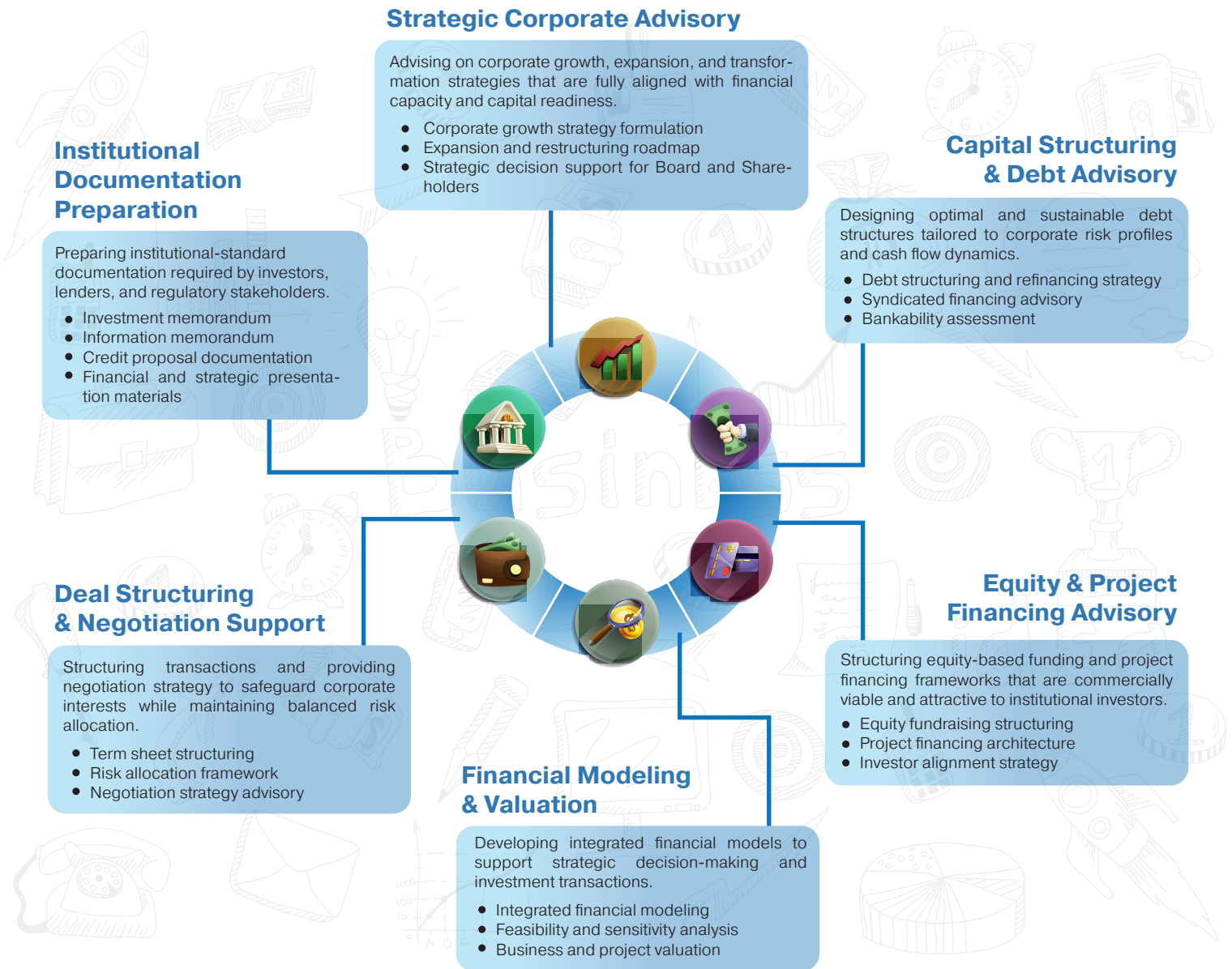
5

Delivering Advisory with Discipline and Accountability

Supporting strategic decision-making from planning through execution with structured methodologies and results-oriented implementation.

Core Service

PT. Sutan Nusantara Investama provides advisory services focused on corporate strategy and capital architecture, delivered with institutional-grade analytical rigor and disciplined execution.



Our Approach

1

Strategy Before Structure

Every mandate begins with strategic clarity. We assess corporate objectives, growth ambitions, shareholder expectations, and risk appetite before designing any financial structure.

2

Capital Architecture with Precision

We design capital structures that are aligned with cash flow capacity, risk exposure, and long-term sustainability.

Financial modeling

Risk mapping

Sensitivity analysis

Scenario-based stress testing

3

Institutional Readiness

Access to capital requires credibility. We prepare companies to meet institutional standards through structured documentation, transparent financial frameworks, and governance alignment.

Investor trust is built on preparation and integrity.

4

Risk-Calibrated Execution

We embed risk assessment into every transaction.

From deal structuring to negotiation strategy, we ensure balanced risk allocation and capital efficiency.

Growth must be measured, defensible, and sustainable.

5

Long-Term Partnership Orientation

We do not operate transactionally. Our role extends beyond structuring — we serve as a strategic partner to Boards and Shareholders in navigating complex capital decisions.

Our objective is not merely closing deals — but building enduring enterprise value.

Industry Focus

PT. Sutan Nusantara Investama focuses on industries where capital strategy, financial structuring, and disciplined execution are critical to scalable growth and long-term value creation. We concentrate on sectors characterized by capital intensity, structural transformation, and strong expansion potential.

Infrastructure & Logistics

Including ports, transportation networks, and integrated logistics ecosystems. This sector requires long-term capital structuring, regulatory alignment, and disciplined risk management to ensure sustainable returns and institutional bankability.



Energy & Natural Resources

Covering conventional and renewable energy, as well as resource-based industries. We support project financing architecture, feasibility modeling, and structured capital deployment to ensure commercial viability and investor confidence.



Industrial & Manufacturing

Advising industrial players on expansion financing, restructuring strategies, and operational scale-up. Focus is placed on capital optimization, cost efficiency, and strengthening long-term competitiveness.



Property & Integrated Development

Providing advisory on project financing, valuation, and capital structuring for residential, commercial, and mixed-use developments. Emphasis on disciplined feasibility analysis and risk-calibrated funding models.



Financial Services & Investment Platforms

Supporting institutions requiring capital optimization, strategic restructuring, and enhanced investment readiness. Leveraging strong analytical frameworks and structured financial architecture.



Technology & Digital Ecosystems

Advising growth-stage and expansion-ready technology companies in structuring equity financing, strategic capital raising, and scalable financial frameworks. In high-growth technology environments, disciplined capital strategy is essential to convert innovation into sustainable enterprise value.



Government-Linked & Strategic Projects

Supporting initiatives aligned with national development agendas and institutional mandates. Including advisory for state-linked corporations and strategic infrastructure programs requiring structured capital and governance alignment.



Why Sutan Strategic?

In today's increasingly complex capital landscape, companies require more than access to funding — they require precise capital architecture, disciplined strategy, and institutional credibility that earns investor trust.

PT. Sutan Nusantara Investama serves as a strategic partner that integrates growth, capital structuring, and integrity within a disciplined, results-oriented advisory framework.

Strategy Before Transactions



We do not begin with the question of “how to raise capital,” but rather “how capital strengthens enterprise value.”

Every financing structure is designed to reinforce long-term corporate strategy — not merely to address short-term liquidity needs.

Institutional Grade Analytical Discipline



Every recommendation is grounded in:

- Integrated financial modeling
- Sensitivity and scenario analysis
- Comprehensive risk mapping

This ensures that strategic decisions withstand scrutiny at the Board, Shareholder, and institutional investor level.

Investor Trust as a Core Foundation



We do not begin with the question of “how to raise capital,” but rather “how capital strengthens enterprise value.”

Every financing structure is designed to reinforce long-term corporate strategy — not merely to address short-term liquidity needs.

Precision in Structuring & Execution



From transaction design to negotiation strategy, we ensure:

- Balanced risk allocation
- Clear and defensible deal structures
- Optimal capital efficiency

Growth must be measured, controlled, and sustainable.

Governance as a Structural Strength



Our governance framework positions certified professionals across finance, risk management, valuation, and corporate governance at the core of operational execution.

This structure reinforces institutional credibility, independence, and accountability in every mandate.

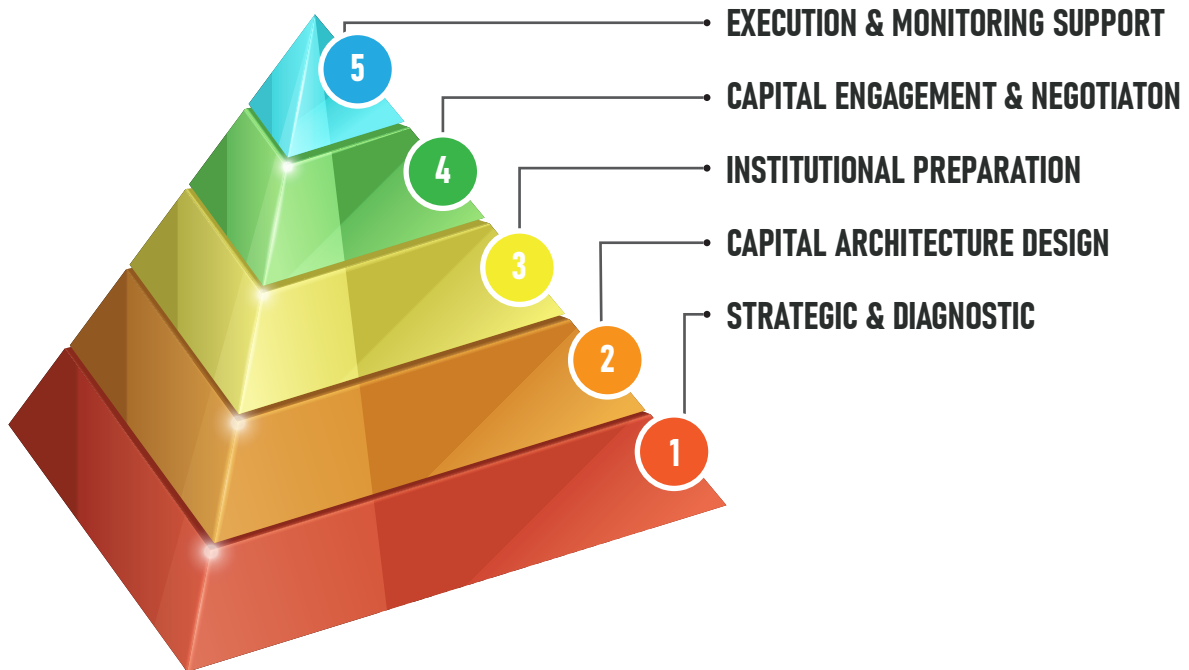
Long-Term Value Orientation



Success is not measured by transactions closed, but by sustainable enterprise value created.

We act as strategic partners in building scalable, resilient, and investor-trusted growth platforms.

Engagement Model



Strategic & Diagnostic

We begin with a comprehensive assessment of the company's strategic objectives, financial position, capital structure, and risk exposure.

Corporate strategy review

Financial performance analysis

Capital structure assessment

Risk profiling

Capital Architecture Design

Based on the diagnostic findings, we design a tailored capital structure aligned with growth objectives and risk capacity.

Financial modeling & scenario analysis

Debt and/or equity structuring

Funding strategy alignment

Investor positioning framework

Institutional Preparation

Before approaching investors or lenders, we ensure the company meets institutional expectations.

Investment memorandum preparation

Financial projections validation

Governance and risk framework alignment

Documentation structuring

Capital Engagement & Negotiation

We support the company throughout capital discussions and transaction structuring.

Investor and lender engagement support

Term sheet structuring

Risk allocation advisory

Negotiation strategy support

Execution & Monitoring Support

Post-transaction, we continue to provide advisory to ensure structured implementation.

Capital deployment oversight

Financial covenant monitoring advisory

Strategic performance review

Governance Ethics

 **INDEPENDENCE & PROFESSIONAL INTEGRITY**

 **GOVERNANCE BY STRUCTURAL DESIGN**

 **RISK - CONSCIOUS ADVISORY APPROACH**

 **RISK - CONSCIOUS ADVISORY APPROACH**

 **CONFIDENTIALITY & INFORMATION DISCIPLINE**

| 1 | 2 | 3 | 4 | 5 |
|---|---|--|---|--|
|  <p>We maintain independence in every mandate.</p> <p>All recommendations are delivered objectively, grounded in disciplined financial analysis, and free from conflicts of interest. We do not compromise professional standards for short-term transactional outcomes.</p> |  <p>We uphold transparency in our communication with clients, investors, and stakeholders.</p> <p>All financial assumptions, risk considerations, and structural recommendations are presented clearly, measured rigorously, and defensible at Board and institutional levels.</p> |  <p>Our corporate structure separates strategic direction from operational execution. While the Founder provides long-term vision, mandates are executed by certified professionals across finance, risk management, valuation, and corporate governance.</p> |  <p>Risk awareness is embedded in every advisory engagement.</p> <p>We ensure that capital structures, transaction designs, and growth strategies maintain disciplined risk balance — safeguarding corporate stability and investor confidence.</p> |  <p>All client and transaction-related information is handled under strict confidentiality standards.</p> <p>Trust is not only built — it is protected.</p> |

Case Experience

PT. XXX

Industry

Oil & Gas

Year

2026

Value

USD 400.000

Case

Unsecured Working Capital Structuring

Impact :

Through the implementation of a contract-based financing structure utilizing receivables assignment and an escrow mechanism, the company successfully secured USD 400.000 in working capital without providing fixed-asset collateral, while preserving balance sheet strength and operational liquidity. The structure ensured smooth and timely project execution, while enhancing credibility with funding partners through controlled, contract-backed cash flows. Strengthened governance and transparent fund monitoring reduced risk exposure and enabled a more efficient cost of capital. This milestone established a solid bankability track record and opened access to larger-scale financing opportunities in the future.

PT. XXX

Industry

Oil & Gas

Year

2025

Value

USD 270.000

Case

Working Capital Facility & Debt Restructuring

Impact :

Through a measured debt restructuring strategy combined with a structured contract-based working capital facility, PT. XXX successfully stabilized operational cash flow while securing additional funding of USD 270.000 without excessive liquidity pressure. Adjustments to tenor and repayment schedules significantly reduced short-term financial burdens, providing the flexibility needed to complete strategic projects on schedule. Enhanced cash flow governance through escrow arrangements and disciplined monitoring restored creditor confidence and strengthened the company's credibility within the Oil & Gas sector. The restructured capital framework not only safeguarded liquidity but also established a healthier and more bankable foundation for sustainable growth.

PT. XXX

Industry

Oil & Gas

Year

2025

Value

USD 900.000

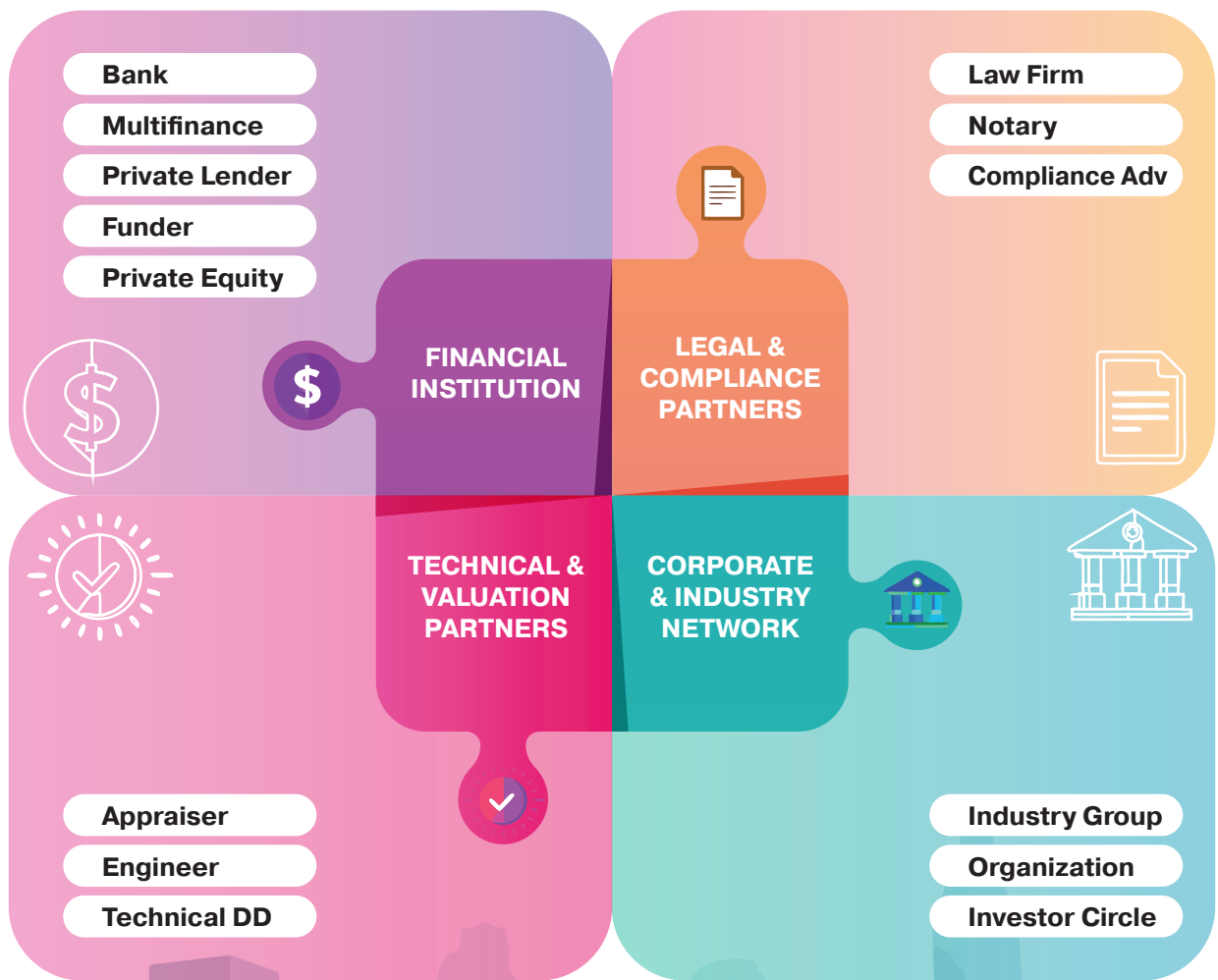
Case

Investment Credit Structuring & Debt Restructuring

Impact :

Through disciplined debt reprofiling and the structuring of a long-term Investment Credit facility amounting to USD 900.000, PT. XXX fundamentally realigned its capital structure with long-term cash flow projections. Tenor adjustments and optimized repayment structures alleviated liquidity pressure, while the structured investment facility enabled expansion of productive assets within the Oil & Gas sector. Supported by rigorous financial modeling and comprehensive stress testing, the company secured sustainable and bankable financing. This transformation strengthened operational capacity and competitiveness, restored creditor confidence, and positioned the company for more strategic funding access in the years ahead.

Network & Strategic Partners



Contact Information



Indonesian Country ;

Mr. Hermin Nurul Yadin

+62 881-0808-88065

PT. SUTAN NUSANTARA INVESTAMA

Jl. Boulevard Metland Cileungsi Blok DF - No. 9 - Cileungsi
Bogor Regency - West Java - Indonesia 16820

☎ +62 811-211-995 ✉ office@sutan-strategic.om